

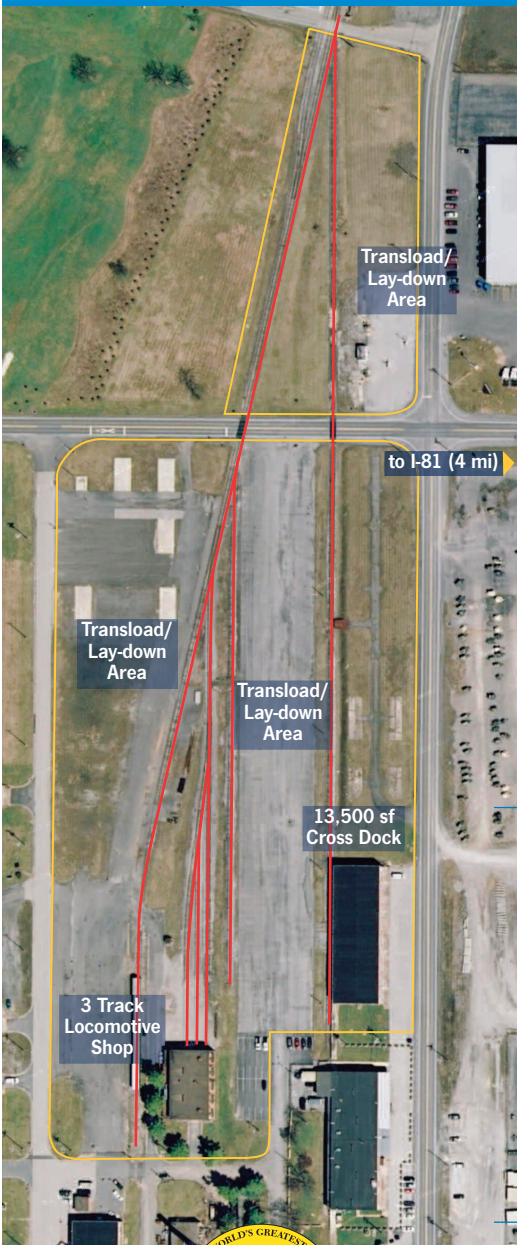


# Your complete multi-service depot

**RAIL-TO-TRUCK TRANSLOADING, CROSS DOCKING, LAY-DOWN, STORAGE, AND REPAIR**

If you are looking for a flexible, multi-use facility that offers complete rail-to-truck services for a wide range of commodities, then look no further than the Pennsylvania & Southern Railway's Chambersburg Depot located in the 1,200-acre Cumberland Valley Business Park.

The facility features a 13,500 sq. ft. cross dock, over 10 acres of transload and lay-down space, six tracks, and a three track locomotive shop all in a commerce-friendly business park in a strategic Northeast location.



## THE P&S CHAMBERSBURG DEPOT

A railroad operated facility; the depot can handle a wide range of commodities and offers hassle-free rail-to-truck transportation and logistics solutions. The cross dock features multiple truck and rail doors, and is perfect for general freight, plywood and other specialty lumber, paper, canned goods and other food grade shipments.

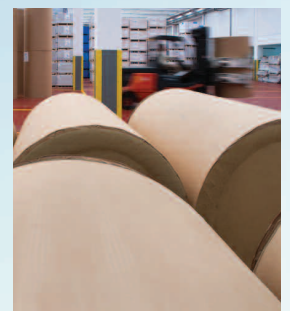


The extensive transload and lay-down areas can handle building products, steel, pipe, dimensional lumber and plastics. The lack of obstructions, firm footing, and wide space between tracks enables cranes and other large transfer vehicles to operate unimpeded when rigging transformers and other over-dimensional loads. The depot is perfect as a front-staging area for construction materials and equipment shipments



## *The P&S Chambersburg Depot can handle all of your shipping challenges:*

- Over 10 acres of space
- 13,500 sq ft crossdock with multiple rail and truck doors
- 3 track locomotive shop
- Specialized commodities handling: food and paper grade, machinery, pipe, plastics, vehicles, and more
- Connection to Class 1 carrier CSX
- Strategic highway access
- Access to major shipping ports



destined for alternative energy ventures or building projects throughout the Northeast. Construction equipment shipments can also be easily transloaded using the railroad's equipment ramps and docks, located only a short distance away.



The P&S Chambersburg Depot also features a three track locomotive shop. Completely enclosed and heated, the shop has under-track inspection pits and storage areas. It is the perfect facility for a light repair and inspection shop for railcars or locomotives.

### THE SHORTLINE ADVANTAGE

As a shortline the Pennsylvania & Southern can offer customized switching services and 3PL connections that meet your specific shipping needs. Our crews can provide on-demand switching and our partners can provide trucking, rigging, and value-added 3PL services. The rail infrastructure at the park can



handle your largest shipments with ease. We have over 500 storage-in-transit spots in our two yards.

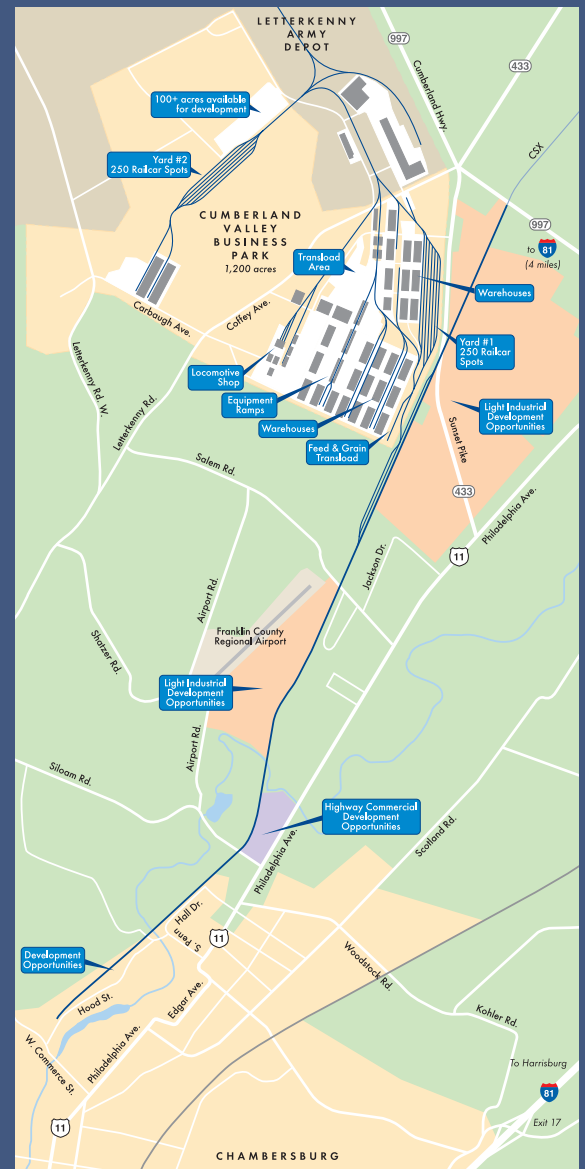
### A RAIL PARTNER WITH NATION-WIDE ACCESS

The Pennsylvania & Southern interchanges with our Class 1 partner CSX in Letterkenny. CSX provides our customers with reliable and timely transportation services throughout the East Coast and all the way to the Mississippi River.

Their extensive connections to other railroads allow customers to reach throughout the United States, Canada, or Mexico.

### A STRATEGIC LOCATION

The Cumberland Valley Business Park and P&S Chambersburg Depot are situated in south-central Pennsylvania along I-81, one of the principal north-south trucking routes connecting the northeast with the mid-Atlantic, and one of the largest distribution center locations on the East Coast. For import and export shipments the location provides easy access to the ports of Baltimore, Norfolk, and New York/New Jersey. Shipments destined for local and regional points are all within quick highway reach: the major cities along the Northeast corridor between New York and Washington, coal-fields in Pennsylvania or in West Virginia, Marcellus Shale regions, and farmlands of eastern Pennsylvania and Maryland.



### PENNSYLVANIA & SOUTHERN CORPORATE HEADQUARTERS

One Gateway Center, Suite 501B, Newton, Massachusetts 02458

Telephone: (617) 243-0137 Fax: (617) 244-0662

Email: eyalshapira@aol.com Web: www.raritancentralrr.com