

# The Switching News

News and happenings from the Raritan Central and Pennsylvania & Southern Railways



## Position yourselves for the future

Dear Friends,  
 Many years ago when we started operations at the Pennsylvania & Southern Railway, we saw the tremendous potential for the development of the region as a hub for rail and logistics services. Acres of available land, a skilled workforce, and excellent rail and highway access were all combined in a prime Northeast location. Since then we have been steadily working to expand and enhance the services the P&S offers. This work has paid off as the P&S is now busier than ever.



We are excited about our latest news: the long-term lease of five miles of track from CSX. This

new track will open up tremendous opportunities for development at a time when others in the industry have recognized the strategic importance of Franklin County. With the burgeoning natural gas drilling industry in Pennsylvania, we also are now positioned to be able to offer companies a perfect staging location for materials and railcars.

Not wanting to forget our Raritan Center operations, we can now report that, with the recent moves by several of our trusted 3PL partners, we are even better able to handle paper and food grade shipments locally, nationally, and globally.

As always, please feel free to call me at any time if you have questions about our services and how they may benefit your operations. I thank you all for your continued business.

Sincerely,  
 Eyal Shapira, *President*

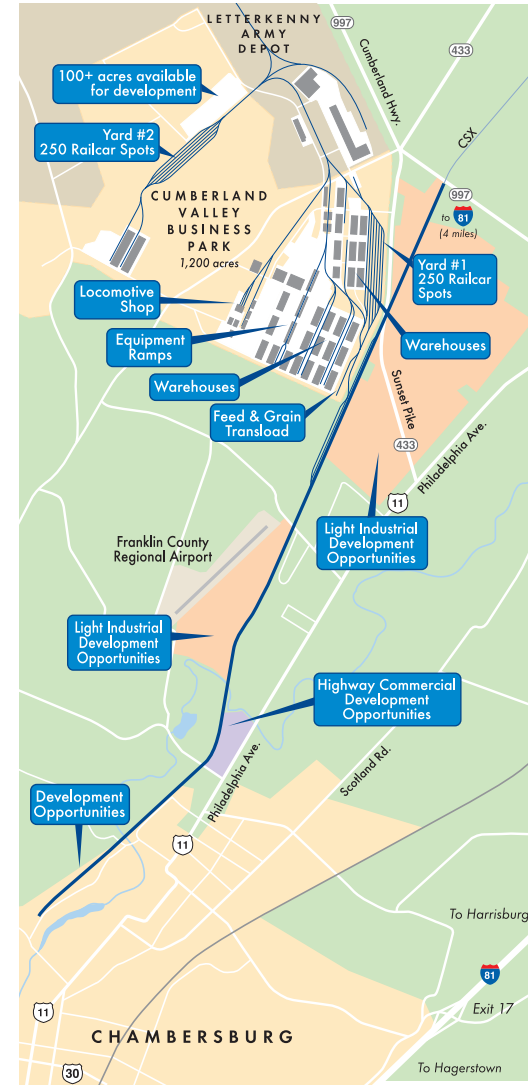
## Expanding our operations in the country's newest emerging rail hub

The Pennsylvania & Southern Railway is pleased to announce that it recently entered into a long-term lease with CSX for five miles of former mainline trackage from Letterkenny to Chambersburg, Pennsylvania. Business at the railroad has been booming these past months, with unit trains of pipe, vehicles, and other materials, and increased shipments of feed and grain. The new line will allow us the flexibility to further grow this traffic by attracting new customers while offering our existing customers the space needed to expand their operations. It will also help to solidify our position as a transportation and logistics leader in Franklin County, an area which is rapidly becoming one of the newest rail hubs in the Northeast.



The new line connects with our railroad at the Cumberland Valley Business Park. It parallels Route 11 and has several potential customers, as well as hundreds of acres of prime, rail-served, zoned light industrial land available for development. With convenient interstate access and two Class-1 rail intermodal facilities nearby, the land is perfect for transloading/reloading operations as well as build-to-suit warehouse and cross dock facilities.

We have already completed an extensive tie and rail rejuvenation project at the Letterkenny yard.



The upgraded infrastructure will help handle any new traffic and improve service to our current customers in Letterkenny by allowing us to handle longer and heavier trains.

For more information about the opportunities the new line offers, or how our existing operations in Letterkenny can benefit you, contact us by phone or e-mail: 617-243-0137, eyalshapira@aol.com.



In this issue...

Logistics Team moves to 100 Blue Heron



Izzi Trucking hauls pipe from Edison



Raritan: Perfect for paper



# MOVING TO NEW HEIGHTS IN HIGH-VELOCITY LOGISTICS

Logistics Team, Raritan Center's experts in high-velocity 3PL services for food grade and paper products, has just moved to the 95,000 s/f facility at 100 Blue Heron Way. The state-of-the-art, high-bay building has 32' clear ceilings and offers customers flexible solutions that can support global logistics requirements, whether they need to receive, store, or ship. Logistic Team's innovative inventory management and transportation software provides 100% supply chain visibility, increasing client productivity and accuracy while reducing the bottom line. Customers can also rely on Logistic Team's import/export, port drayage, and LTL/TL trucking services, all in a strategic location right on I-95.



The Raritan Central's rail yard is adjacent to the building, giving Logistics Team "high-velocity" rail capacity and unlimited switches per day. Connections to two Class 1 railroads allow customers to reach locations throughout North America quickly and reliably. With the Raritan Central Railway and Logistics Team, customers have a winning combination offering the services and facilities that can be customized to handle any logistics challenge. Visit the Logistics Team website for more information on how they can support your business: [www.logisticsteam.com](http://www.logisticsteam.com).

- Strategic access to the New York City area
- 32' clear ceilings
- Unlimited switches per day
- Multiple rail and truck doors
- Specialized paper and food-grade handling
- Port access in LA and NY/NJ



## Izzi Trucking & Rigging and the Raritan Central partner to keep pipe shipments moving!

The Raritan Central has expanded our service offering after gaining a new 3PL partner, Izzi Trucking & Rigging. Izzi Trucking & Rigging is helping us move a shipment of large diameter, extra-long pipe from supplier Pittsburgh Pipe. The pipe is being shipped on 89' flatcars, unloaded, and marshalled at our building products reload facility on Northfield Ave. in Raritan Center. From there, Izzi Trucking and Rigging handles the over-the-road logistics to the job site. The Raritan Central provides daily switching services to the reload to ensure the pipe is spotted the morning it is received.



Izzi Trucking and Rigging has nearly four decades of experience handling large loads for customers. They have a full range of modern equipment capable of meeting every transportation need. For more information on using Izzi's services at Raritan Center, call or email Eyal Shapira at 617-243-0137 or [eyalshapira@aol.com](mailto:eyalshapira@aol.com).

## The solution to your car storage dilemma

If you have a fleet of railcars and need to store them short-term or long-term, look no further than the Pennsylvania & Southern Railway. We have over 700 carspots, competitive rates, and fast in/out switching services. We also offer on-site AAR Certified car repair services capable of handling both major and minor repairs. With our extensive space we can also handle your largest storage needs, including unit trains of hoppers, autoracks, or flatcars. For more information call or email Eyal Shapira at 617-243-0137 or [eyalshapira@aol.com](mailto:eyalshapira@aol.com).



Photo courtesy A. Strauss-Wieder, Inc.

## Helping to teach the importance of rail service in the supply chain

This past spring a group of professionals who make governmental investment, policy and regulatory decisions visited the Raritan Central to gain a better understanding of how rail supports the supply chain. The participants observed two of our transloads to learn about the rail-to-truck transfer process for materials such as plastics and gypsum board. The educational initiative was sponsored by A. Strauss-Wieder, Inc. The Raritan Central was pleased to be able to help our leadership learn first-hand the importance of rail to the health of the economy.



Plastic Express, our on-site plastic and resin handling expert, has moved its Blue Heron operations to a new location at 410 Clearview Avenue in Raritan Center. The 95,000 s/f building will provide transloading, crossdock, and warehousing services. The facility will enhance and support Plastic Express' bagging and transfer operations at Northfield Ave. and Fieldcrest Ave. The Raritan Central backs Plastic Express' services with over 100 transloading and 325 storage-in-transit carspots. To find out more visit Plastic Express' website: [www.plasticexpress.com](http://www.plasticexpress.com)



# CALLING ALL (BOX)CARS!

If you ship or receive paper products by boxcar in the New York/New Jersey area, then you need to join us at Raritan Center in Edison, New Jersey! The Raritan Central has multiple 3PL partners who specialize in the handling of paper. They can speed up your supply chain while lowering your costs. The Raritan Center Business Park also has some of the most modern buildings in the region that are perfectly designed for cross docking and warehousing high-value, high-volume, time-sensitive shipments of paper rolls. With warehouse spaces of up to 95,000 s/f, 32' high ceilings, and multiple rail and truck doors, our 3PL partners can handle domestic and international shipments with ease.



When you choose Raritan Center as your distribution hub, you will be in the most strategically-located business park in the Northeast. Our location right off Exit 10 on I-95 will allow you to reach the entire Northeast Corridor from Washington to Boston in a day or less trucking time. Raritan Center is also only minutes from the Port of New York and New Jersey, giving you worldwide reach.



The Raritan Central backs our 3PL partners' services with rapid and dependable switching, including switching-on-demand when needed. Our connection to two Class 1 railroads means that you can import loads from the paper producing regions of Canada, the upper Midwest, and New England quickly and easily, or ship loads to anywhere in North America.

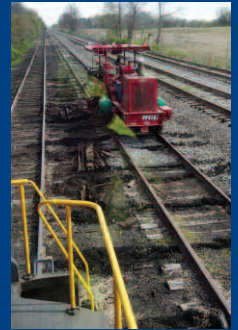
Call or email us for more information on how we can put our expertise and services to work for you. We'll match you up with our 3PL partner that best meets your specific needs.



## Investing in our Pennsylvania infrastructure

Improving service to Letterkenny

The Pennsylvania & Southern Railway is completing a nearly half-million dollar upgrade of the trackage in the Cumberland Valley Business Park and in the CSX interchange yard. The work has seen 2,000 new ties inserted, rails replaced, ballast spread, and switches completely rebuilt. In the last year the Pennsylvania & Southern has seen a major jump in carloadings which put a strain on the old trackage. With the upgrades the Pennsylvania & Southern will be able to safely and quickly handle 80 car unit trains of supplies and materials to and from the Letterkenny Army Depot without having to break them up into sections.



The investment in our track comes at a time when rail service to Franklin County is growing and when the army depot is seeing increased shipments. We expect this traffic to only increase in the future as the second of two intermodal terminals opens in the county, and the location continues to be developed into a rail hub for Northeast shipping. By investing in our transportation infrastructure we will help to create jobs by attracting new businesses while helping existing businesses to expand as they become more competitive in the Northeast marketplace.



## The railways at-a-glance

### RARITAN CENTRAL

Size:	17 miles
Class 1 Connections:	CSX, NS
Market Access:	I-95, I-287, 440, NJ Pike
Space Served:	21,000,000 sq. ft.
Developable Land:	5 - 38 acres
Car Spots Available:	420
3PL Services:	Packaging, Warehousing, Crossdock, Transload, Reload, Distribution

### PENNSYLVANIA & SOUTHERN

Size:	30 miles
Class 1 Connections:	CSX
Market Access:	I-81, I-76, I-70
Space Served:	1,500,000 sq. ft.
Developable Land:	5 - 200 acres
Car Spots Available:	700
3PL Services:	Warehousing, Crossdock, Transload, Reload, Distribution

## Find out more

To learn more about our operations, contact our team today! We specialize in tailoring our services to meet your individual needs.

Phone: 617-243-0137

Email: [eyalshapira@aol.com](mailto:eyalshapira@aol.com)

Website: [raritancentralrr.com](http://raritancentralrr.com)

